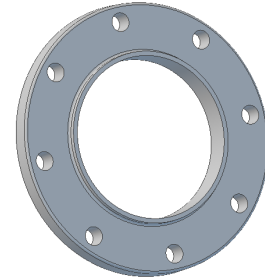


ALUMINUM FLANGES

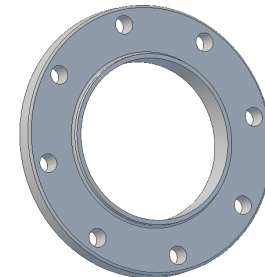
Weld-On Flanges - for O.D. irrigation pipe

 1 inch Cast Aluminum
 Made in the USA

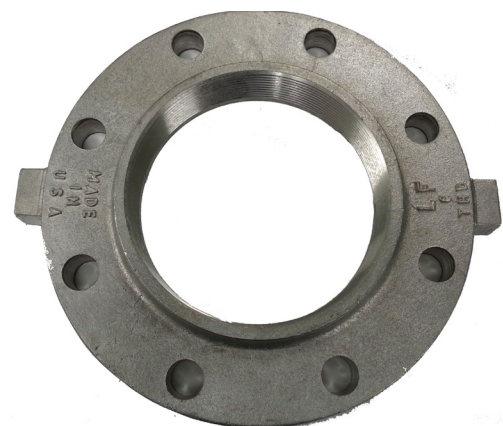
Part #	Size ID	Bolt Circle	# of Holes	Bolt Size
630-30	3"	6"	4	5/8"
630-40	4"	7.5"	8	5/8"
630-50	5"	8.5"	8	3/4"
630-60	6"	9.5"	8	3/4"
630-80	8"	11.75"	8	3/4"
630-100	10"	14.25"	12	7/8"
630-120	12"	17"	12	7/8"


Weld-On Flanges - for IPS Aluminum Pipe

Part #	Size ID	Bolt Circle	# of Holes	Bolt Size
633-20	2" IPS	4.75"	4	5/8"
633-25	2.5" IPS	5.5"	4	5/8"
633-30	3" IPS	6"	4	5/8"
633-40	4" IPS	7.5"	8	5/8"
633-50	5" IPS	8.5"	8	3/4"
633-60	6" IPS	9.5"	8	3/4"
633-80	8" IPS	11.75"	8	3/4"


Threaded Female Aluminum Flanges

Part #	Size ID	Bolt Circle	# of Holes	Bolt Size
634-20	2" IPS	4.75"	4	5/8"
634-25	2.5" IPS	5.5"	4	5/8"
634-30	3" IPS	6"	4	5/8"
634-40	4" IPS	7.5"	8	5/8"
634-50	5" IPS	8.5"	8	3/4"
634-60	6" IPS	9.5"	8	3/4"
634-80	8" IPS	11.75"	8	3/4"



STEEL FLANGES

Steel - 1/2 inch plate Weld Flanges - for O.D. tube size

Part #	Size ID	Bolt Circle	#of Holes	Bolt Size
631-20	2"	4.75"	4	5/8"
631-25	2.5"	5.5"	4	5/8"
631-30	3"	6"	4	5/8"
631-40	4"	7.5"	8	5/8"
631-50	5"	8.5"	8	3/4"
631-60	6"	9.5"	8	3/4"
631-80	8"	11.75"	8	3/4"
631-100	10"	14.25"	12	7/8"
631-120	12"	17"	12	7/8"
631-140	14"	18.75"	12	1"
631-160	16"	21.25"	16	1"
631-180	18"	22.75"	16	1"


 Valves
 Hand/Main
 Line Parts
 Pivot Parts

Steel - 1/2 inch plate Weld Flanges - for IPS pipe

Part #	Size ID	Bolt Circle	#of Holes	Bolt Size
631-21	2 1/2"	4 3/4"	4	5/8"
631-31	3 1/2"	6"	4	5/8"
631-41	4 1/2"	7 1/2"	8	5/8"
631-51	5 5/8"	8 1/2"	8	3/4"
631-61	6 5/8"	9 1/2"	8	3/4"
631-81	8 5/8"	11 3/4"	8	3/4"
631-101	10 3/4"	14 1/4"	12	7/8"
631-121	12 3/4"	17"	12	7/8"


 Flanges
 Aluminum/
 Steel Fab

Blind Plate Flanges - 1/2" thick

Part #	Bolt Circle	#of Holes	Bolt Size
676-20	4 3/4"	4	5/8"
676-25	5 1/2"	4	5/8"
676-30	6"	4	5/8"
676-40	7 1/2"	8	5/8"
676-50	8 1/2"	8	3/4"
676-60	9 1/2"	8	3/4"
676-80	11 3/4"	8	3/4"
676-100	14 1/4"	12	7/8"
676-120	17"	12	7/8"
676-140	18 3/4"	12	1"
676-160	21 1/4"	16	1"
676-180	22 3/4"	16	1 1/8"


 Hose &
 Accessories
 Sprinklers
 Primer
 Pumps
 Wheel Line
 Parts

150 PSI RED SBR FLANGE GASKETS

Industrial Standard RING TYPE Flange Gaskets

1/8" Red SBR Rubber RING TYPE

151-020	2" x 1/8"
151-025	2 1/2" x 1/8"
151-030	3" x 1/8"
151-040	4" x 1/8"
151-050	5" x 1/8"
151-060	6" x 1/8"
151-080	8" x 1/8"
151-100	10"x1/8"
151-120	12"x1/8"
151-140	14"x1/8"
151-160	16"x1/8"
151-180	18"x1/8"
151-200	20"x1/8"
151-240	24"x1/8"



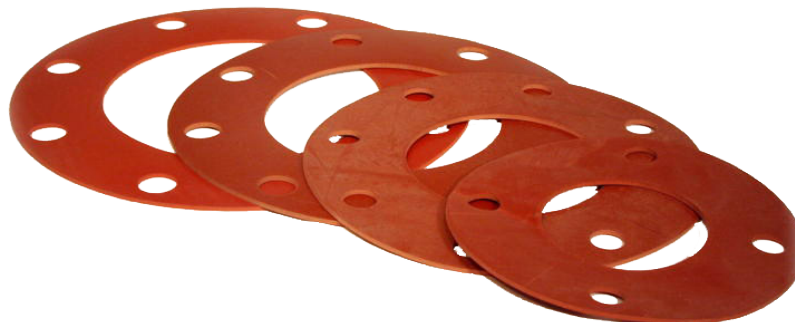
Industrial Standard 150 psi

1/8" Red SBR Rubber FULL FACE

150-020	2" x 1/8"
150-025	2 1/2" x 1/8"
150-030	3" x 1/8"
150-040	4" x 1/8"
150-050	5" x 1/8"
150-060	6" x 1/8"
150-080	8" x 1/8"
150-100	10"x1/8"
150-120	12"x1/8"
150-140	14"x1/8"
150-160	16"x1/8"
150-180	18"x1/8"
150-200	20"x1/8"
150-240	24"x1/8"

1/16" Red SBR Rubber FULL FACE

152-020	2" x 1/16"
152-025	2 1/2" x 1/16"
152-030	3" x 1/16"
152-040	4" x 1/16"
152-050	5" x 1/16"
152-060	6" x 1/16"
152-080	8" x 1/16"
152-100	10" x 1/16"
152-120	12" x 1/16"
152-140	14" x 1/16"
152-160	16" x 1/16"
152-180	18" x 1/16"
152-200	20" x 1/16"
152-240	24" x 1/16"



Valves
Hand/Main Line Parts
Pivot Parts
Flanges
Aluminum/Steel Fab
Hose & Accessories
Sprinklers
Primer Pumps
Wheel Line Parts



Toll Free (800) 410-5263 Fax (866) 410-5263

www.irrigationgaskets.com

8:00 am to 4:30pm PST

150 PSI NON-ASBESTOS FLANGE GASKETS

Industrial Standard RING TYPE Flange Gaskets

1/16" thick Non-Asbestos

153-020	2" x 1/16"
153-025	2 1/2" x 1/16"
153-030	3" x 1/16"
153-040	4" x 1/16"
153-050	5" x 1/16"
153-060	6" x 1/16"
153-080	8" x 1/16"
153-100	10"x1/16"
153-120	12"x1/16"
153-140	14"x1/16"
153-160	16"x1/16"
153-180	18"x1/16"
153-200	20"x1/16"
153-240	24"x1/16"

Industrial Standard FULL FACE 1/16" thick

Non-Asbestos

154-020	2" x 1/16"
154-025	2 1/2" x 1/16"
154-030	3" x 1/16"
154-040	4" x 1/16"
154-050	5" x 1/16"
154-060	6" x 1/16"
154-080	8" x 1/16"
154-100	10" x 1/16"
154-120	12" x 1/16"
154-140	14" x 1/16"
154-160	16" x 1/16"
154-180	18" x 1/16"
154-200	20" x 1/16"
154-240	24" x 1/16"



Flange Gaskets available in other materials and styles with a short lead time. Are you using something we don't stock? Inquire for great pricing and we will make sure to keep it in stock.

Valves
Hand/Main Line Parts
Pivot Parts
Flanges
Aluminum/Steel Fab
Hose & Accessories
Sprinklers
Primer Pumps
Wheel Line Parts

BOLT KITS

BOLT KITS - everything needed for quick flange assembly in one package

Butterfly Valve Bolt Kits - include nuts and bolts only

Butterfly valve using steel 1/2" plates		Butterfly valve using aluminum plates	
632-01	3"	632-08	3"
632-02	4"	632-09	4"
632-03	5"	632-10	5"
632-04	6"	632-11	6"
632-05	8"	632-12	8"
632-06	10"	632-13	10"
632-07	12"	632-14	12"

Flange by Flange Bolt Kits - include nuts, bolts, and one 1/8" full face gasket

Flange by Flange - steel 1/2" plates		Flange by Flange - aluminum plates	
632-15	3"	632-22	3"
632-16	4"	632-23	4"
632-17	5"	632-24	5"
632-18	6"	632-25	6"
632-19	8"	632-26	8"
632-20	10"	632-27	10"
632-21	12"	632-28	12"

Wafer Check Valve Bolt Kits - includes nuts, bolts, and two 1/8" full face gaskets

Wafer Check valve - steel 1/2" plates		Wafer Check valve - aluminum plates	
632-29	4"	632-34	4"
632-30	6"	632-35	6"
632-31	8"	632-36	8"
632-32	10"	632-37	10"
632-33	12"	632-38	12"



Valves
Hand/Main Line Parts
Pivot Parts
Flanges
Aluminum/Steel Fab
Hose & Accessories
Sprinklers
Primer Pumps
Wheel Line Parts