

**ALUMINUM PIPE FITTINGS - SCHEDULE 40**

**Aluminum Pipe Couplings**

635-02	1/4"
635-03	3/8"
635-05	1/2"
635-07	3/4"
635-10	1"
635-13	1 1/4"
635-15	1 1/2"
635-20	2"
635-25	2 1/2"
635-30	3"
635-40	4"
635-50	5"
635-60	6"
635-80	8"



**Aluminum Pipe Close Nipple**

637-02	1/4"
637-03	3/8"
637-05	1/2"
637-07	3/4"
637-10	1"
637-12	1 1/4"
637-15	1 1/2"
637-20	2"
637-25	2 1/2"
637-30	3"
637-40	4"

**Aluminum Pipe Half Couplings**

636-02	1/4"
636-03	3/8"
636-05	1/2"
636-07	3/4"
636-10	1"
636-12	1 1/4"
636-15	1 1/2"
636-20	2"
636-25	2 1/2"
636-30	3"
636-40	4"
636-50	5"
636-60	6"
636-80	8"



**Aluminum Pipe Half Nipple**

638-05	1/2"
638-07	3/4"
638-10	1"
638-12	1 1/4"
638-15	1 1/2"
638-20	2"
638-25	2 1/2"
638-30	3"
638-40	4"
638-50	5"
638-60	6"
638-80	8"

**Victaulic Pipe Couplers**

639-20	2"
639-30	3"
639-40	4"
639-50	5"
639-60	6"
639-80	8"



Valves  
Hand/Main Line Parts  
Pivot Parts  
Flanges  
Aluminum/Steel Fab  
Hose & Accessories  
Sprinklers  
Primer Pumps  
Wheel Line Parts

## ALUMINUM ADAPTERS

Part # Size

### REDUCER CONES

640-3x2	3x2
640-4x2	4x2
640-4x3	4x3
640-5x4	5x4
640-6x4	6x4
640-6x5	6x5
640-8x6	8x6
640-10x8	10x8
640-12x10	12x10



### DOME END CAPS

641-60	6
641-80	8
641-100	10



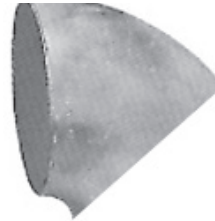
### 90 DEGREE WELDING ELBOWS

642-40	4
642-60	6
642-80	8
642-100	10



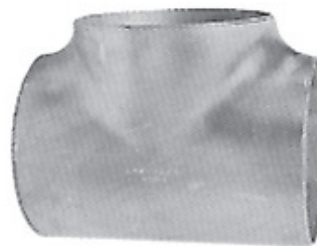
### 45 DEGREE WELDING ELBOWS

645-40	4
645-60	6
645-80	8
645-100	10



### WELDING TEES

643-60	6
643-80	8
643-100	10



### WELD-ON DISCS 10 GAUGE

644-20	2
644-30	3
644-40	4
644-50	5
644-60	6
644-80	8
644-100	10



Valves  
Hand/Main Line Parts  
Pivot Parts  
Flanges  
Aluminum/Steel Fab  
Hose & Accessories  
Sprinklers  
Primer Pumps  
Wheel Line Parts

**STEEL FABRICATION FITTINGS**

**WELD-ON HALF COUPLING**

Part #	Desc	Length	List
677-025	0.25" FPT	0.75"	
677-050	0.5" FPT	0.75"	
677-075	0.75" FPT	0.75"	
677-100	1" FPT	1"	
677-125	1.25" FPT	1"	
677-150	1.5" FPT	1"	
677-200	2" FPT	1.1"	
677-250	2.5" FPT	1.6"	
677-300	3" FPT	1.6"	
677-400	4" FPT	1.8"	
677-500	5" FPT	1.9"	
677-600	6" FPT	2"	
677-800	8" FPT	2.1"	

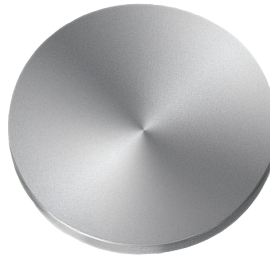


**WELD-ON TOE NIPPLES**

Part#	Desc	Length
678-050	0.5" MPT	2"
678-075	0.75" MPT	2"
678-100	1" MPT	2"
678-125	1.25" MPT	2"
678-150	1.5" MPT	2"
678-200	2" MPT	2"
678-250	2.5" MPT	2.5"
678-300	3" MPT	3"
678-400	4" MPT	3"
678-500	5" MPT	3"
678-600	6" MPT	3"
678-800	8" MPT	4"

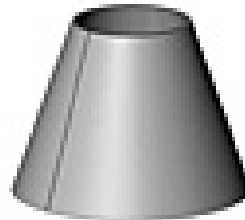
**WELD-ON STEEL DISCS 12 GAUGE**

679-20	2
679-30	3
679-40	4
679-50	5
679-60	6
679-80	8
679-100	10
679-120	12



**CONCENTRIC CONES - BLACK 14GA**

BWC23	2x3
BWC33	3x3 1/2
BWC34	3x4
BWC44	4x4 1/2
BWC45	4x5
BWC46	4x6
BWC48	4x8
BWC56	5x6
BWC66	6x6 1/2
BWC68	6x8
BWC81	8x10
BWC102	10x12
BWC124	12x14



**ECCENTRIC CONES ALSO AVAILABLE**

Valves  
Hand/Main Line Parts  
Pivot Parts  
Flanges  
Aluminum/Steel Fab  
Hose & Accessories  
Sprinklers  
Primer Pumps  
Wheel Line Parts